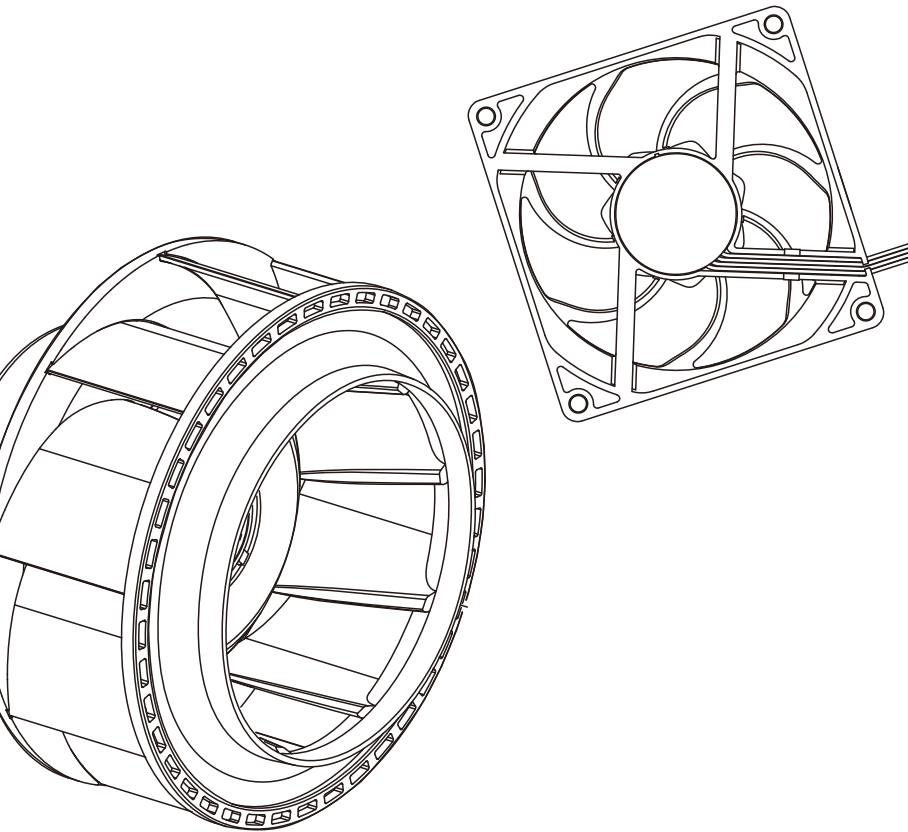


San Ace

Cooling Systems

Handy Catalog



SANYO DENKI

San Ace Cooling Systems

DC Fan

.....P5 to 16

Cooling fan operating at 5V, 12V, 24V, and 48V DC. An extensive lineup of fans featuring high airflow and high static pressure.
36mm sq. to ϕ 200mm.

Low Power Consumption Fan

These fans greatly reduce power consumption while also providing high airflow and high static pressure.
38mm sq. to 92mm sq.

Silent Fan

Cooling fan that decrease noise and vibration.
60mm sq. to 120mm sq.



Counter Rotating Fan

.....P.16 to 17

Airflow and static pressure become higher than two conventional products of the same size connected in a series.
38mm sq. to ϕ 172mm sq.



Splash Proof Fan

.....P.18 to 20

Cooling fan of IP54, IP55 and IP68 waterproof capability.
60mm sq. to ϕ 172mm.



Splash Proof Centrifugal Fan

.....P.20 to 21

IP54 splash proof centrifugal fan.
 ϕ 100mm to ϕ 175mm.



Oil Proof Fan

.....P.21 to 22

Cooling fan capable of operating in an oil-mist environment.
40mm sq. to 120mm sq.



Long Life Fan

.....P.22 to 25

Cooling fan with max. 200,000 hours of expected life.
40mm sq. to ϕ 172mm.



Centrifugal Fan

.....P.25

Cooling fan blows air in a centrifugal course.
It features high static pressure.
 ϕ 100mm to ϕ 175mm



Blower

.....P.26 to 27

Cooling fan specialized for high static pressure.
52mm to 160mm



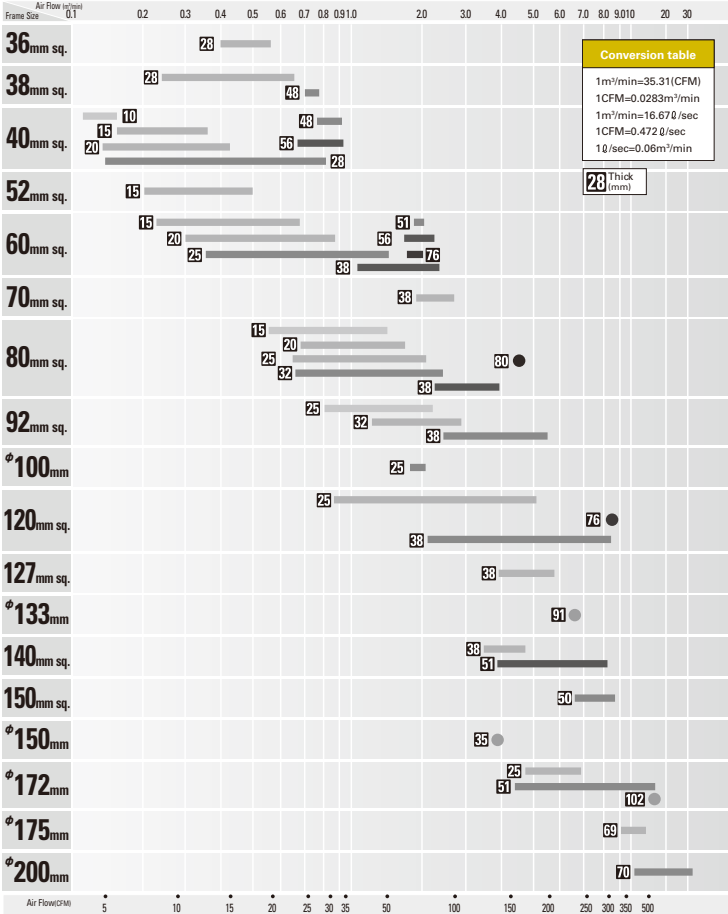
AC Fan

.....P.28 to 31

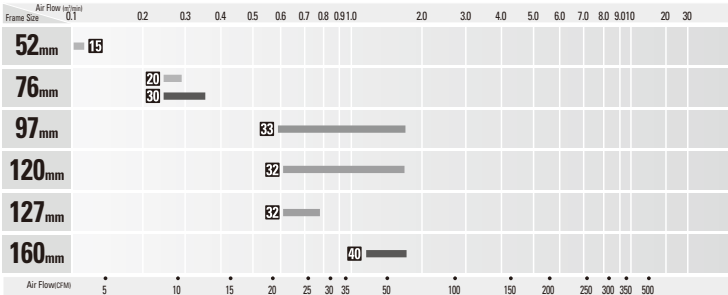
Cooling fan operating at 100V to 230V AC.
60mm sq. to ϕ 172mm



DC Fan Domain Diagram

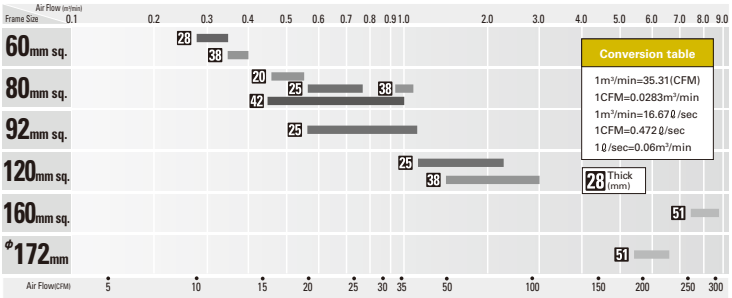


Blower



Listed are the Model Number excerpts of SanAce Catalog.
 For other line-up and technical documents, please refer to the Catalog.

AC Fan Domain Diagram



Listed are the Model Number excerpts of SanAce Catalog.
 For other line-up and technical documents, please refer to the Catalog.

Cooling Fan Units

Example of application



- We build cooling systems that are most suitable for the client's purposes. The unit includes a range of cooling fans that are optimally adjusted according to the situation and a custom-made fan unit.
- In addition, we design and develop fan units that are optimally suited to the client's requirements.

DC San Ace

DC Fan



36×36×28mm 9GV type



Model No.	Rated Voltage [V]	Rated Current [A]	Rated Speed [min ⁻¹]	Max. Air Flow [m ³ /min] [CFM]	Max. Static Pressure [Pa] [inchH ₂ O]	SPL [dB(A)]
9GV3612J301	12	0.75	19,000	0.55 19.4	525 2.108	58.5



Low Power Consumption Fan

38×38×28mm 9GA type



Model No.	Rated Voltage [V]	Rated Current [A]	Rated Speed [min ⁻¹]	Max. Air Flow [m ³ /min] [CFM]	Max. Static Pressure [Pa] [inchH ₂ O]	SPL [dB(A)]
9GA0312P3K001	12	0.62	25,000	0.60 21.2	800 3.21	59.0



38×38×28mm 9GV type



Model No.	Rated Voltage [V]	Rated Current [A]	Rated Speed [min ⁻¹]	Max. Air Flow [m ³ /min] [CFM]	Max. Static Pressure [Pa] [inchH ₂ O]	SPL [dB(A)]
9GV0312K301	12	0.79	18,200	0.65 23	425 1.707	59



40×40×10mm



Model No.	Rated Voltage [V]	Rated Current [A]	Rated Speed [min ⁻¹]	Max. Air Flow [m ³ /min] [CFM]	Max. Static Pressure [Pa] [inchH ₂ O]	SPL [dB(A)]
109P0405H901	5	0.16	6,200	0.15 5.3	41.2 0.165	25
109P0412H901	12	0.07	6,200	0.15 5.3	41.2 0.165	25



Low Power Consumption Fan

40×40×15mm 9GA type



Model No.	Rated Voltage [V]	Rated Current [A]	Rated Speed [min ⁻¹]	Max. Air Flow [m ³ /min] [CFM]	Max. Static Pressure [Pa] [inchH ₂ O]	SPL [dB(A)]
9GA0412P7G001	12	0.17	13,100	0.36 12.7	192 0.77	42



40×40×15mm



Model No.	Rated Voltage [V]	Rated Current [A]	Rated Speed [min ⁻¹]	Max. Air Flow [m ³ /min] [CFM]	Max. Static Pressure [Pa] [inchH ₂ O]	SPL [dB(A)]
109P0405H701	5	0.28	7,700	0.18 6.4	75.5 0.303	28
109P0412R701	12	0.13	9,700	0.227 8.0	111.9 0.449	34
109P0424H701	24	0.08	7,700	0.18 6.4	75.5 0.303	28



Low Power Consumption Fan

40×40×20mm 9GA type



Model No.	Rated Voltage [V]	Rated Current [A]	Rated Speed [min ⁻¹]	Max. Air Flow [m ³ /min] [CFM]	Max. Static Pressure [Pa] [inchH ₂ O]	SPL [dB(A)]
9GA0405P6H001	5	0.35	12,400	0.33 11.7	191 0.77	40
9GA0412P6G001	12	0.23	16,000	0.42 14.8	318 1.28	47
9GA0424P6G001	24	0.13	16,000	0.42 14.8	318 1.28	47

DC Fan



40×40×20mm



Model No.	Rated Voltage [V]	Rated Current [A]	Rated Speed [min ⁻¹]	Max. Air Flow [m ³ /min] [CFM]	Max. Static Pressure [Pa] [inchH ₂ O]	SPL [dB(A)]
109P0405J601	5	0.46	9,800	0.28 9.9	98.5 0.396	39
109P0412G601	12	0.28	12,500	0.35 12.4	153.8 0.618	44
109P0424G601	24	0.15	12,500	0.35 12.4	153.8 0.618	44



Low Power Consumption Fan

40×40×28mm 9GA type



Model No.	Rated Voltage [V]	Rated Current [A]	Rated Speed [min ⁻¹]	Max. Air Flow [m ³ /min] [CFM]	Max. Static Pressure [Pa] [inchH ₂ O]	SPL [dB(A)]
9GA0412P3K01	12	0.92	22,000	0.81 28.6	799 3.21	61
9GA0424P3J001	24	0.27	18,000	0.67 23.7	535 2.15	54



40×40×28mm Low vibration 9GE type



Model No.	Rated Voltage [V]	Rated Current [A]	Rated Speed [min ⁻¹]	Max. Air Flow [m ³ /min] [CFM]	Max. Static Pressure [Pa] [inchH ₂ O]	SPL [dB(A)]
9GE0412P3K03	12	0.84	16,500	0.76 26.8	415 1.666	58



40×40×28mm 9GV type



Model No.	Rated Voltage [V]	Rated Current [A]	Rated Speed [min ⁻¹]	Max. Air Flow [m ³ /min] [CFM]	Max. Static Pressure [Pa] [inchH ₂ O]	SPL [dB(A)]
9GV0412K301	12	0.84	16,500	0.76 26.8	415 1.668	58



40×40×28mm



Model No.	Rated Voltage [V]	Rated Current [A]	Rated Speed [min ⁻¹]	Max. Air Flow [m ³ /min] [CFM]	Max. Static Pressure [Pa] [inchH ₂ O]	SPL [dB(A)]
109P0405H3013	5	0.68	8,700	0.32 11.3	102.9 0.414	37
109P0412K3013	12	0.55	15,500	0.59 20.8	340 1.365	50
109P0424R3013	24	0.25	14,000	0.51 18.0	263.4 1.057	47



Low Power Consumption Fan

52×52×15mm 9GA type



Model No.	Rated Voltage [V]	Rated Current [A]	Rated Speed [min ⁻¹]	Max. Air Flow [m ³ /min] [CFM]	Max. Static Pressure [Pa] [inchH ₂ O]	SPL [dB(A)]
9GA0512P7G001	12	0.13	7,800	0.50 17.7	91.5 0.367	38
9GA0524P7G001	24	0.07	7,800	0.50 17.7	91.5 0.367	38




52×52×15mm


Model No.	Rated Voltage	Rated Current	Rated Speed	Max. Air Flow		Max. Static Pressure		SPL
	[V]	[A]	[min ⁻¹]	[m ³ /min]	[CFM]	[Pa]	[inchH ₂ O]	[dB(A)]
109P0505M701	5	0.15	3,700	0.205	7.24	21.4	0.086	22
109P0512A701	12	0.21	6,800	0.375	13.25	69.7	0.280	36
109P0524A701	24	0.11	6,800	0.375	13.24	69.7	0.280	36


Low Power Consumption Fan
60×60×15mm 9GA type


Model No.	Rated Voltage	Rated Current	Rated Speed	Max. Air Flow		Max. Static Pressure		SPL
	[V]	[A]	[min ⁻¹]	[m ³ /min]	[CFM]	[Pa]	[inchH ₂ O]	[dB(A)]
9GA0612P7G01	12	0.16	5,900	0.68	24	80	0.320	38


60×60×15mm


Model No.	Rated Voltage	Rated Current	Rated Speed	Max. Air Flow		Max. Static Pressure		SPL
	[V]	[A]	[min ⁻¹]	[m ³ /min]	[CFM]	[Pa]	[inchH ₂ O]	[dB(A)]
109P0605H701	5	0.26	4,100	0.40	14.1	38.2	0.153	32
109P0612K701	12	0.26	6,500	0.62	21.9	99.3	0.399	45
109P0624J701	24	0.14	6,200	0.61	21.5	86.5	0.347	44


Low Power Consumption Fan
60×60×20mm 9GA type


Model No.	Rated Voltage	Rated Current	Rated Speed	Max. Air Flow		Max. Static Pressure		SPL
	[V]	[A]	[min ⁻¹]	[m ³ /min]	[CFM]	[Pa]	[inchH ₂ O]	[dB(A)]
9GA0612P6G001	12	0.26	6,850	0.88	31.1	125	0.50	43
9GA0624P6G001	24	0.12	6,850	0.88	31.1	125	0.50	43


60×60×20mm


Model No.	Rated Voltage	Rated Current	Rated Speed	Max. Air Flow		Max. Static Pressure		SPL
	[V]	[A]	[min ⁻¹]	[m ³ /min]	[CFM]	[Pa]	[inchH ₂ O]	[dB(A)]
109P0612W601	12	0.13	4,200	0.42	14.8	31.8	0.128	31
109P0624W601	24	0.07	4,200	0.42	14.8	31.8	0.128	31
109P0648H601	48	0.07	5,600	0.55	19.4	52.9	0.212	41


Silent Fan
60×60×25mm 9S type


Model No.	Rated Voltage	Rated Current	Rated Speed	Max. Air Flow		Max. Static Pressure		SPL
	[V]	[A]	[min ⁻¹]	[m ³ /min]	[CFM]	[Pa]	[inchH ₂ O]	[dB(A)]
9S0612S401	12	0.20	5,000	0.74	26.1	65.7	0.26	31

DC San Ace

DC Fan



60×60×25mm 9G type



Model No.	Rated Voltage [V]	Rated Current [A]	Rated Speed [min ⁻¹]	Max. Air Flow [m ³ /min] [CFM]	Max. Static Pressure [Pa] [inchH ₂ O]	SPL [dB(A)]
9G0612P4S001	12	0.67	11,000	1.4 49.4	300 1.20	53
9G0624P4S001	24	0.34	11,000	1.4 49.4	300 1.20	53
9G0648P4S001	48	0.18	11,000	1.4 49.4	305 1.22	53



60×60×25mm



Model No.	Rated Voltage [V]	Rated Current [A]	Rated Speed [min ⁻¹]	Max. Air Flow [m ³ /min] [CFM]	Max. Static Pressure [Pa] [inchH ₂ O]	SPL [dB(A)]
109R0605H401	5	0.34	3,800	0.53 18.7	40.2 0.161	28
109R0612J401	12	0.47	7,600	1.06 37.1	155.0 0.622	44
109R0624J401	24	0.24	7,600	1.06 37.1	155.0 0.622	44
109R0648J401	48	0.12	7,600	1.06 37.1	155.0 0.622	44



60×60×25mm San Cooler



Model No.	Rated Voltage [V]	Rated Current [A]	Rated Speed [min ⁻¹]	Max. Air Flow [m ³ /min] [CFM]	Max. Static Pressure [Pa] [inchH ₂ O]	SPL [dB(A)]
9A0612G401	12	0.24	5,600	0.78 27.6	87.3 0.351	39
9A0624G401	24	0.13	5,600	0.78 27.6	87.3 0.351	39



Low Power Consumption Fan

60×60×38mm 9GA type



Model No.	Rated Voltage [V]	Rated Current [A]	Rated Speed [min ⁻¹]	Max. Air Flow [m ³ /min] [CFM]	Max. Static Pressure [Pa] [inchH ₂ O]	SPL [dB(A)]
9GA0612P1J03	12	1.50	17,500	1.75 62	820 3.3	63
9GA0624P1J03	24	0.75	17,500	1.75 62	820 3.3	63



60×60×38mm 9GV type



Model No.	Rated Voltage [V]	Rated Current [A]	Rated Speed [min ⁻¹]	Max. Air Flow [m ³ /min] [CFM]	Max. Static Pressure [Pa] [inchH ₂ O]	SPL [dB(A)]
9GV0612P1G03	12	2.8	16,000	2.37 84	751 3.02	66
9GV0624P1G03	24	1.4	16,000	2.37 84	751 3.02	66
9GV0648P1H03	48	0.5	14,500	2.15 76	617 2.48	63



60×60×38mm 9G type



Model No.	Rated Voltage [V]	Rated Current [A]	Rated Speed [min ⁻¹]	Max. Air Flow [m ³ /min] [CFM]	Max. Static Pressure [Pa] [inchH ₂ O]	SPL [dB(A)]
9G0612G101	12	1.54	11,800	1.84 65	435 1.747	58
9G0624G101	24	0.85	11,800	1.84 65	435 1.747	58
9G0648G101	48	0.35	11,800	1.84 65	435 1.747	58





Low Power Consumption Fan

70×70×38mm 9GA type



Model No.	Rated Voltage [V]	Rated Current [A]	Rated Speed [min ⁻¹]	Max. Air Flow [m ³ /min] [CFM]	Max. Static Pressure [Pa] [inchH ₂ O]	SPL [dB(A)]
9GA0712P1G001	12	2.6	16,500	2.65 93.6	860 3.45	65



Low Power Consumption Fan

80×80×15mm 9GA type



Model No.	Rated Voltage [V]	Rated Current [A]	Rated Speed [min ⁻¹]	Max. Air Flow [m ³ /min] [CFM]	Max. Static Pressure [Pa] [inchH ₂ O]	SPL [dB(A)]
9GA0812P7G001	12	0.29	6,100	1.44 50.9	84.0 0.34	41
9GA0824P7G001	24	0.13	6,100	1.44 50.9	84.0 0.34	41



80×80×15mm



Model No.	Rated Voltage [V]	Rated Current [A]	Rated Speed [min ⁻¹]	Max. Air Flow [m ³ /min] [CFM]	Max. Static Pressure [Pa] [inchH ₂ O]	SPL [dB(A)]
109P0812H701	12	0.2	3,100	0.91 32.1	29.4 0.118	31
109P0824H701	24	0.1	3,100	0.91 32.1	29.4 0.118	31



Low Power Consumption Fan

80×80×20mm 9GA type



Model No.	Rated Voltage [V]	Rated Current [A]	Rated Speed [min ⁻¹]	Max. Air Flow [m ³ /min] [CFM]	Max. Static Pressure [Pa] [inchH ₂ O]	SPL [dB(A)]
9GA0812P6G001	12	0.3	5,850	1.72 60.78	110 0.44	45
9GA0824P6G001	24	0.15	5,850	1.72 60.78	110 0.44	45



80×80×20mm



Model No.	Rated Voltage [V]	Rated Current [A]	Rated Speed [min ⁻¹]	Max. Air Flow [m ³ /min] [CFM]	Max. Static Pressure [Pa] [inchH ₂ O]	SPL [dB(A)]
109P0812C601	12	0.29	3,700	1.07 37.8	46 0.185	39
109P0824H601	24	0.12	2,900	0.84 29.7	29.4 0.118	31
109P0848C601	48	0.08	3,700	1.07 37.8	46 0.185	39



Low Power Consumption Fan

80×80×25mm 9GA type



Model No.	Rated Voltage [V]	Rated Current [A]	Rated Speed [min ⁻¹]	Max. Air Flow [m ³ /min] [CFM]	Max. Static Pressure [Pa] [inchH ₂ O]	SPL [dB(A)]
9GA0812P4J001	12	0.6	7,400	2.07 73.0	177.6 0.7	48
9GA0824P4J001	24	0.28	7,400	2.07 73.0	177.6 0.7	48

DC San Ace

DC Fan



Silent Fan

80×80×25mm 9S type



Model No.	Rated Voltage [V]	Rated Current [A]	Rated Speed [min ⁻¹]	Max. Air Flow [m ³ /min] [CFM]	Max. Static Pressure [Pa] [inchH ₂ O]	SPL [dB(A)]
9S0812H401	12	0.23	3,400	1.12 39.5	52.15 0.20	31
9S0824M401	24	0.06	2,500	0.83 29.3	27.5 0.110	22



80×80×25mm 9GV type



Model No.	Rated Voltage [V]	Rated Current [A]	Rated Speed [min ⁻¹]	Max. Air Flow [m ³ /min] [CFM]	Max. Static Pressure [Pa] [inchH ₂ O]	SPL [dB(A)]
9GV0812P4K03	12	0.87	5,600	2.12 74.8	173.0 0.69	52
9GV0824P4K01	24	0.44	5,600	2.12 74.8	173.0 0.69	52
9GV0848P4K03	48	0.22	5,600	2.12 74.8	173.0 0.69	52



80×80×25mm



Model No.	Rated Voltage [V]	Rated Current [A]	Rated Speed [min ⁻¹]	Max. Air Flow [m ³ /min] [CFM]	Max. Static Pressure [Pa] [inchH ₂ O]	SPL [dB(A)]
109R0805F401	5	0.25	2,600	0.92 32.5	28.4 0.114	26
109R0812G401	12	0.37	4,500	1.50 53.0	80.4 0.323	40
109R0824G401	24	0.20	4,500	1.50 53.0	80.4 0.323	40
109R0848K401	48	0.10	4,600	1.56 55.1	88.4 0.355	41



80×80×25mm San Cooler



Model No.	Rated Voltage [V]	Rated Current [A]	Rated Speed [min ⁻¹]	Max. Air Flow [m ³ /min] [CFM]	Max. Static Pressure [Pa] [inchH ₂ O]	SPL [dB(A)]
9A0812G401	12	0.38	4,500	1.5 53.0	80.3 0.323	40
9A0824G401	24	0.21	4,500	1.5 53.0	80.3 0.323	40



Low Power Consumption Fan

80×80×32mm 9GA type



Model No.	Rated Voltage [V]	Rated Current [A]	Rated Speed [min ⁻¹]	Max. Air Flow [m ³ /min] [CFM]	Max. Static Pressure [Pa] [inchH ₂ O]	SPL [dB(A)]
9GA0812P2S001	12	0.83	9,700	2.45 86.5	360 1.45	57
9GA0824P2S001	24	0.42	9,700	2.45 86.5	360 1.45	57



80×80×32mm



Model No.	Rated Voltage [V]	Rated Current [A]	Rated Speed [min ⁻¹]	Max. Air Flow [m ³ /min] [CFM]	Max. Static Pressure [Pa] [inchH ₂ O]	SPL [dB(A)]
109P0812A201	12	0.56	4,600	1.52 53.7	91.1 0.366	45
109P0824A201	24	0.29	4,600	1.52 53.7	91.1 0.366	45
109P0848H201	48	0.06	3,350	1.10 38.9	50.9 0.204	35


80×80×38mm 9HV type


Model No.	Rated Voltage [V]	Rated Current [A]	Rated Speed [min ⁻¹]	Max. Air Flow [m ³ /min] [CFM]	Max. Static Pressure [Pa] [inchH ₂ O]	SPL [dB(A)]
9HV0812P1G001	12	3.4	14,900	3.7 130.7	1,000 4.0	69
9HV0848P1G001	48	0.85	14,900	3.7 130.7	1,000 4.0	69


Low Power Consumption Fan
80×80×38mm 9GA type


Model No.	Rated Voltage [V]	Rated Current [A]	Rated Speed [min ⁻¹]	Max. Air Flow [m ³ /min] [CFM]	Max. Static Pressure [Pa] [inchH ₂ O]	SPL [dB(A)]
9GA0812P1G61	12	1.2	10,500	2.85 100.6	480 1.92	60
9GA0824P1S61	24	0.47	9,550	2.6 91.8	480 1.93	59


80×80×38mm 9GV type


Model No.	Rated Voltage [V]	Rated Current [A]	Rated Speed [min ⁻¹]	Max. Air Flow [m ³ /min] [CFM]	Max. Static Pressure [Pa] [inchH ₂ O]	SPL [dB(A)]
9GV0812P1G03	12	3.80	10,200	3.9 138.0	490.0 1.97	65
9GV0824P1G03	24	1.6	10,200	3.9 138.0	490.0 1.97	65
9GV0848P1G03	48	0.84	10,200	3.9 138.0	490.0 1.97	65


80×80×38mm 9G type


Model No.	Rated Voltage [V]	Rated Current [A]	Rated Speed [min ⁻¹]	Max. Air Flow [m ³ /min] [CFM]	Max. Static Pressure [Pa] [inchH ₂ O]	SPL [dB(A)]
9G0812K101	12	1.8	7,800	3.10 107.3	310 1.285	58
9G0824G101	24	0.56	6,300	2.55 90	211 0.847	51
9G0848G101	48	0.27	6,300	2.55 90	211 0.847	51


Low Power Consumption Fan
92×92×25mm 9GA type


Model No.	Rated Voltage [V]	Rated Current [A]	Rated Speed [min ⁻¹]	Max. Air Flow [m ³ /min] [CFM]	Max. Static Pressure [Pa] [inchH ₂ O]	SPL [dB(A)]
9GA0912P4J03	12	0.39	5,000	2.20 77.7	105 0.42	43
9GA0924P4J03	24	0.2	5,000	2.20 77.7	105 0.42	43


Silent Fan
92×92×25mm 9S type


Model No.	Rated Voltage [V]	Rated Current [A]	Rated Speed [min ⁻¹]	Max. Air Flow [m ³ /min] [CFM]	Max. Static Pressure [Pa] [inchH ₂ O]	SPL [dB(A)]
9S0912F401	12	0.14	2,650	1.26 44.5	30.0 0.120	27
9S0924F401	24	0.09	2,650	1.26 44.5	30.0 0.120	27

DC San Ace

DC Fan



92×92×25mm



Model No.	Rated Voltage [V]	Rated Current [A]	Rated Speed [min ⁻¹]	Max. Air Flow [m ³ /min] [CFM]	Max. Static Pressure [Pa] [inchH ₂ O]	SPL [dB(A)]
109P0912J401	12	0.56	4,300	2.03 71.6	92.2 0.37	47
109P0924W401	24	0.12	2,850	1.45 51.2	45 0.181	33
109P0948H401	48	0.06	2,850	1.45 51.2	45 0.181	33



92×92×25mm San Cooler



Model No.	Rated Voltage [V]	Rated Current [A]	Rated Speed [min ⁻¹]	Max. Air Flow [m ³ /min] [CFM]	Max. Static Pressure [Pa] [inchH ₂ O]	SPL [dB(A)]
9A0912G401	12	0.39	3,900	1.76 62.1	66.5 0.267	43
9A0924G401	24	0.19	3,900	1.76 62.1	66.5 0.267	43
9A0948S401	48	0.08	3,550	1.66 58.6	56.1 0.225	39



92×92×32mm 9G type



Model No.	Rated Voltage [V]	Rated Current [A]	Rated Speed [min ⁻¹]	Max. Air Flow [m ³ /min] [CFM]	Max. Static Pressure [Pa] [inchH ₂ O]	SPL [dB(A)]
9G0912A201	12	0.58	4,300	2.50 88.3	115 0.462	44
9G0924A201	24	0.30	4,300	2.50 88.3	115 0.462	44
9G0948A201	48	0.16	4,300	2.50 88.3	115 0.462	44



92×92×38mm 9HV type



Model No.	Rated Voltage [V]	Rated Current [A]	Rated Speed [min ⁻¹]	Max. Air Flow [m ³ /min] [CFM]	Max. Static Pressure [Pa] [inchH ₂ O]	SPL [dB(A)]
9HV0912P1G001	12	5.2	14,900	5.1 180	1,100 4.42	72
9HV0948P1G001	48	1.2	14,900	5.1 180	1,100 4.42	72



Low Power Consumption Fan

92×92×38mm 9GA type



Model No.	Rated Voltage [V]	Rated Current [A]	Rated Speed [min ⁻¹]	Max. Air Flow [m ³ /min] [CFM]	Max. Static Pressure [Pa] [inchH ₂ O]	SPL [dB(A)]
9GA0912P1H03	12	2.10	9,700	4.00 141	500 2.01	63
9GA0948P1H03 ※	48	0.55	9,700	4.00 141	500 2.01	63

※ With ribs only



92×92×38mm 9GV type



Model No.	Rated Voltage [V]	Rated Current [A]	Rated Speed [min ⁻¹]	Max. Air Flow [m ³ /min] [CFM]	Max. Static Pressure [Pa] [inchH ₂ O]	SPL [dB(A)]
9GV0912P1G03	12	4.10	9,000	5.35 189.0	430.0 1.73	68
9GV0948P1H03	48	0.82	8,500	5.05 178.0	385.0 1.55	64


92×92×38mm 9G type


Model No.	Rated Voltage [V]	Rated Current [A]	Rated Speed [min ⁻¹]	Max. Air Flow [m ³ /min] [CFM]		Max. Static Pressure [Pa] [inchH ₂ O]		SPL [dB(A)]
9G0912G101	12	1.1	5,000	3.10	110	150	0.602	50
9G0924G101	24	0.55	5,000	3.10	110	150	0.602	50
9G0948J101	48	0.32	5,500	3.41	120.49	178	0.715	55


Silent Fan
120×120×25mm 9S type


Model No.	Rated Voltage [V]	Rated Current [A]	Rated Speed [min ⁻¹]	Max. Air Flow [m ³ /min] [CFM]		Max. Static Pressure [Pa] [inchH ₂ O]		SPL [dB(A)]
9S1212H401	12	0.39	2,700	2.45	86.5	45.2	0.18	36
9S1224M401	24	0.06	1,850	1.66	58.6	22.7	0.090	24


120×120×25mm 9GV type


Model No.	Rated Voltage [V]	Rated Current [A]	Rated Speed [min ⁻¹]	Max. Air Flow [m ³ /min] [CFM]		Max. Static Pressure [Pa] [inchH ₂ O]		SPL [dB(A)]
9GV1212P4G01	12	1.68	5,100	4.83	171	224	0.90	58
9GV1224P4G01	24	0.84	5,100	4.83	171	224	0.90	58
9GV1248P4J01	48	0.5	5,400	5.11	180	251	1.01	59


120×120×25mm 9G type


Model No.	Rated Voltage [V]	Rated Current [A]	Rated Speed [min ⁻¹]	Max. Air Flow [m ³ /min] [CFM]		Max. Static Pressure [Pa] [inchH ₂ O]		SPL [dB(A)]
9G1212G401	12	0.90	4,100	3.68	130	120	0.482	51
9G1224G401	24	0.47	4,100	3.68	130	120	0.482	51
9G1248G401	48	0.23	4,100	3.68	130	120	0.482	51


120×120×38mm 9HV type


Model No.	Rated Voltage [V]	Rated Current [A]	Rated Speed [min ⁻¹]	Max. Air Flow [m ³ /min] [CFM]		Max. Static Pressure [Pa] [inchH ₂ O]		SPL [dB(A)]
9HV1248P1G001	48	2.0	11,500	8.3	293	1,300	5.22	75


120×120×38mm 9GV type


Model No.	Rated Voltage [V]	Rated Current [A]	Rated Speed [min ⁻¹]	Max. Air Flow [m ³ /min] [CFM]		Max. Static Pressure [Pa] [inchH ₂ O]		SPL [dB(A)]
9GV1212P1J01	12	3.00	6,400	6.35	224.0	360.0	1.45	64
9GV1224P1J01	24	1.5	6,400	6.35	224.3	360.0	1.45	64
9GV1248P1J01	48	0.75	6,400	6.35	224.0	360.0	1.45	64

DC San Ace

DC Fan



120×120×38mm 9G type



Model No.	Rated Voltage	Rated Current	Rated Speed	Max. Air Flow		Max. Static Pressure		SPL
	[V]	[A]	[min ⁻¹]	[m ³ /min]	[CFM]	[Pa]	[inchH ₂ O]	[dB(A)]
9G1212G101	12	0.98	3,600	3.88	137	135	0.542	49
9G1224G101	24	0.50	3,600	3.88	137	135	0.542	49
9G1248G101	48	0.25	3,600	3.88	137	135	0.542	49



120×120×38mm 9SG type



Model No.	Rated Voltage	Rated Current	Rated Speed	Max. Air Flow		Max. Static Pressure		SPL
	[V]	[A]	[min ⁻¹]	[m ³ /min]	[CFM]	[Pa]	[inchH ₂ O]	[dB(A)]
9SG1212G101	12	4.0	6,000	7.35	260	340	1.37	64
9SG1224G101	24	2.0	6,000	7.35	260	340	1.37	64
9SG1248G101	48	1.0	6,000	7.35	260	340	1.37	64



127×127×38mm



Model No.	Rated Voltage	Rated Current	Rated Speed	Max. Air Flow		Max. Static Pressure		SPL
	[V]	[A]	[min ⁻¹]	[m ³ /min]	[CFM]	[Pa]	[inchH ₂ O]	[dB(A)]
109P1312S101	12	1.3	3,300	4.2	148	117.6	0.472	47
109P1324S101	24	0.55	3,300	4.2	148	117.6	0.472	47
109P1348S101	48	0.3	3,300	4.2	148	117.6	0.472	47



127×127×38mm



Model No.	Rated Voltage	Rated Current	Rated Speed	Max. Air Flow		Max. Static Pressure		SPL
	[V]	[A]	[min ⁻¹]	[m ³ /min]	[CFM]	[Pa]	[inchH ₂ O]	[dB(A)]
109E1312A101	12	1.4	3,850	4.81	170	155	0.622	52
109E1324A101	24	1.1	4,550	5.66	200	216	0.867	57
109E1348A101	48	0.54	4,550	5.66	200	216	0.867	57



140×140×38mm



Model No.	Rated Voltage	Rated Current	Rated Speed	Max. Air Flow		Max. Static Pressure		SPL
	[V]	[A]	[min ⁻¹]	[m ³ /min]	[CFM]	[Pa]	[inchH ₂ O]	[dB(A)]
109P1412H101	12	0.73	2,600	4.5	159	94	0.378	46
109P1424H101	24	0.37	2,600	4.5	159	94	0.378	46
109P1448H101	48	0.2	2,600	4.5	159	94	0.378	46



150×150×50mm 9GV type



Model No.	Rated Voltage	Rated Current	Rated Speed	Max. Air Flow		Max. Static Pressure		SPL
	[V]	[A]	[min ⁻¹]	[m ³ /min]	[CFM]	[Pa]	[inchH ₂ O]	[dB(A)]
9GV1512H501	12	2.9	3,900	8.54	300	210	0.84	61
9GV1524M501	24	0.6	3,000	6.35	224	132	0.53	53


φ172×147×25mm


Model No.	Rated Voltage [V]	Rated Current [A]	Rated Speed [min ⁻¹]	Max. Air Flow [m ³ /min] [CFM]	Max. Static Pressure [Pa] [inchH ₂ O]	SPL [dB(A)]
109E4712M401	12	1.3	2,800	5.2 183	92 0.369	51
109E4724H401	24	1.0	3,400	6.4 226	135 0.542	57
109E4748S401	48	0.62	3,650	6.8 240	156 0.627	58


φ172×150×51mm 9SG type


Model No.	Rated Voltage [V]	Rated Current [A]	Rated Speed [min ⁻¹]	Max. Air Flow [m ³ /min] [CFM]	Max. Static Pressure [Pa] [inchH ₂ O]	SPL [dB(A)]
9SG5724P5H61	24	2.8	6,500	11.6 410	540 2.16	71
9SG5748P5G01	48	2.91	8,600	15.46 546	1,000 4.02	78


φ172×150×51mm 9GV type


Model No.	Rated Voltage [V]	Rated Current [A]	Rated Speed [min ⁻¹]	Max. Air Flow [m ³ /min] [CFM]	Max. Static Pressure [Pa] [inchH ₂ O]	SPL [dB(A)]
9GV5724H501	24	4.0	6,300	11.32 400	690 2.77	74
9GV5748H501	48	2.0	6,300	11.32 400	690 2.77	74


φ172×150×51mm


Model No.	Rated Voltage [V]	Rated Current [A]	Rated Speed [min ⁻¹]	Max. Air Flow [m ³ /min] [CFM]	Max. Static Pressure [Pa] [inchH ₂ O]	SPL [dB(A)]
109E5712K501	12	2.9	4,100	8.5 300	243.0 0.976	60
109E5724C501	24	2.3	4,800	9.9 350	308.0 1.237	66
109E5748C501	48	1.2	4,800	9.9 350	308.0 1.237	66


φ172×51mm


Model No.	Rated Voltage [V]	Rated Current [A]	Rated Speed [min ⁻¹]	Max. Air Flow [m ³ /min] [CFM]	Max. Static Pressure [Pa] [inchH ₂ O]	SPL [dB(A)]
109E1712K501	12	2.9	4,100	8.5 300	243.0 0.976	55
109E1724C501	24	2.3	4,800	9.9 350	308.0 1.237	60
109E1748C501	48	1.2	4,800	9.9 350	308.0 1.237	60


φ200×70mm 9GV type


Model No.	Rated Voltage [V]	Rated Current [A]	Rated Speed [min ⁻¹]	Max. Air Flow [m ³ /min] [CFM]	Max. Static Pressure [Pa] [inchH ₂ O]	SPL [dB(A)]
9GV2048P0G201	48	12.5	8,000	31.5 1,112	1,400 5.62	81

DC Fan



φ200×70mm



Model No.	Rated Voltage	Rated Current	Rated Speed		Max. Air Flow		Max. Static Pressure		SPL
	[V]	[A]	[min ⁻¹]		[m ³ /min]	[CFM]	[Pa]	[inchH ₂ O]	
9EC2024H001	24	2.0	3,600		11.0	388	360	1.446	60
9EC2048J001	48	4.4	6,100		18.3	646	1,000	4.016	75

Counter Rotating Fan



38×38×48mm 9CRA type



Model No.	Rated Voltage [V]	Rated Current [A]	Rated Speed		Max. Air Flow		Max. Static Pressure		SPL
			[min ⁻¹]		[m ³ /min]	[CFM]	[Pa]	[inchH ₂ O]	
			Inlet	Outlet	[m ³ /min]	[CFM]	[Pa]	[inchH ₂ O]	
9CRA0312P4K03	12	1.5	17,600	14,520	0.77	27.2	700.0	2.81	64



40×40×48mm 9CRA type



Model No.	Rated Voltage [V]	Rated Current [A]	Rated Speed		Max. Air Flow		Max. Static Pressure		SPL
			[min ⁻¹]		[m ³ /min]	[CFM]	[Pa]	[inchH ₂ O]	
			Inlet	Outlet	[m ³ /min]	[CFM]	[Pa]	[inchH ₂ O]	
9CRA0412P4K03	12	1.60	17,500	11,700	0.920	32.50	650.0	2.610	64



40×40×56mm 9CRB type



Model No.	Rated Voltage [V]	Rated Current [A]	Rated Speed		Max. Air Flow		Max. Static Pressure		SPL
			[min ⁻¹]		[m ³ /min]	[CFM]	[Pa]	[inchH ₂ O]	
			Inlet	Outlet	[m ³ /min]	[CFM]	[Pa]	[inchH ₂ O]	
9CRB0412P5S201	12	1.4	22,000	19,700	0.9	31.8	1,045	4.197	68



40×40×56mm 9CRD type



Model No.	Rated Voltage [V]	Rated Current [A]	Rated Speed		Max. Air Flow		Max. Static Pressure		SPL
			[min ⁻¹]		[m ³ /min]	[CFM]	[Pa]	[inchH ₂ O]	
			Inlet	Outlet	[m ³ /min]	[CFM]	[Pa]	[inchH ₂ O]	
9CRD0412P5J03	12	1.15	19,000	12,600	0.87	30.72	630	2.53	61



40×40×56mm Low vibration 9CRE type



Model No.	Rated Voltage [V]	Rated Current [A]	Rated Speed		Max. Air Flow		Max. Static Pressure		SPL
			[min ⁻¹]		[m ³ /min]	[CFM]	[Pa]	[inchH ₂ O]	
			Inlet	Outlet	[m ³ /min]	[CFM]	[Pa]	[inchH ₂ O]	
9CRE0412P5J03	12	1.4	15,800	12,200	0.90	31.8	570.0	2.290	62



40×40×56mm 9CRA type



Model No.	Rated Voltage [V]	Rated Current [A]	Rated Speed		Max. Air Flow		Max. Static Pressure		SPL
			[min ⁻¹]		[m ³ /min]	[CFM]	[Pa]	[inchH ₂ O]	
			Inlet	Outlet	[m ³ /min]	[CFM]	[Pa]	[inchH ₂ O]	
9CRA0412K501	12	1.8	17,000	13,000	0.95	33.5	650	2.61	65

Counter Rotating Fan

**60×60×51mm 9CR type**

Model No.	Rated Voltage [V]	Rated Current [A]	Rated Speed [min ⁻¹]		Max. Air Flow		Max. Static Pressure		SPL [dB(A)]
			Inlet	Outlet	[m ³ /min]	[CFM]	[Pa]	[inchH ₂ O]	
9CR0612P5G03	12	2.7	11,500	9,000	2.03	71.7	600	2.41	68

**60×60×56mm 9CRA type**

Model No.	Rated Voltage [V]	Rated Current [A]	Rated Speed [min ⁻¹]		Max. Air Flow		Max. Static Pressure		SPL [dB(A)]
			Inlet	Outlet	[m ³ /min]	[CFM]	[Pa]	[inchH ₂ O]	
9CRA0612P6K001	12	3.10	18,300	15,800	2.28	80.5	1,130	4.54	73

**60×60×76mm 9CRA type**

Model No.	Rated Voltage [V]	Rated Current [A]	Rated Speed [min ⁻¹]		Max. Air Flow		Max. Static Pressure		SPL [dB(A)]
			Inlet	Outlet	[m ³ /min]	[CFM]	[Pa]	[inchH ₂ O]	
9CRA0612P0G001	12	2.3	16,500	13,000	2.0	70.6	1,000	4.0	66

**80×80×80mm 9CRA type**

Model No.	Rated Voltage [V]	Rated Current [A]	Rated Speed [min ⁻¹]		Max. Air Flow		Max. Static Pressure		SPL [dB(A)]
			Inlet	Outlet	[m ³ /min]	[CFM]	[Pa]	[inchH ₂ O]	
9CRA0812P8G001	12	5.3	12,000	11,300	4.5	158.9	1,150	4.62	76
9CRA0848P8G001	48	1.32	12,000	11,300	4.5	158.9	1,150	4.62	76

**120×120×76mm 9CR type**

Model No.	Rated Voltage [V]	Rated Current [A]	Rated Speed [min ⁻¹]		Max. Air Flow		Max. Static Pressure		SPL [dB(A)]
			Inlet	Outlet	[m ³ /min]	[CFM]	[Pa]	[inchH ₂ O]	
9CR1212P0G03	12	7.2	6,200	3,800	8.5	300	480	1.93	70

**φ172×150×102mm 9CR type**

Model No.	Rated Voltage [V]	Rated Current [A]	Rated Speed [min ⁻¹]		Max. Air Flow		Max. Static Pressure		SPL [dB(A)]
			Inlet	Outlet	[m ³ /min]	[CFM]	[Pa]	[inchH ₂ O]	
9CR5748P9G001	48	5.5	7,300	6,400	18	636	1,400	5.62	83

Splash Proof Fan

**60×60×25mm 9WP type****IP68****Pulse sensor** **OPTION Ribless**

Model No.	Rated Voltage [V]	Rated Current [A]	Rated Speed [min ⁻¹]	Max. Air Flow [m ³ /min] [CFM]	Max. Static Pressure [Pa] [inchH ₂ O]	SPL [dB(A)]
9WP0612G401	12	0.21	5,600	0.78 27.5	87.3 0.351	39
9WP0624G401	24	0.13	5,600	0.78 27.5	87.3 0.351	39
9WP0648H401	48	0.04	3,800	0.53 18.7	40.2 0.161	28

**80×80×25mm 9WP type****IP68****Pulse sensor** **OPTION Ribless**

Model No.	Rated Voltage [V]	Rated Current [A]	Rated Speed [min ⁻¹]	Max. Air Flow [m ³ /min] [CFM]	Max. Static Pressure [Pa] [inchH ₂ O]	SPL [dB(A)]
9WP0812G401	12	0.38	4,500	1.50 53	80.4 0.323	40
9WP0824S401	24	0.1	3,400	1.20 42.4	48.0 0.193	34
9WP0848S401	48	0.06	3,400	1.20 42.4	48.0 0.193	34

**80×80×25mm 9WS type****IP54****Pulse sensor** **OPTION Ribless**

Model No.	Rated Voltage [V]	Rated Current [A]	Rated Speed [min ⁻¹]	Max. Air Flow [m ³ /min] [CFM]	Max. Static Pressure [Pa] [inchH ₂ O]	SPL [dB(A)]
9WS0812H401	12	0.16	3,100	0.94 33.2	45.1 0.181	32
9WS0824H401	24	0.09	3,100	0.94 33.2	45.1 0.181	32

**80×80×38mm 9WV type****IP68****PWM** **Pulse sensor** **OPTION Ribless**

Model No.	Rated Voltage [V]	Rated Current [A]	Rated Speed [min ⁻¹]	Max. Air Flow [m ³ /min] [CFM]	Max. Static Pressure [Pa] [inchH ₂ O]	SPL [dB(A)]
9WV0848P1H001	48	0.75	9,700	3.7 131	440 1.77	63

**92×92×25mm 9WS type****IP54****Pulse sensor**

Model No.	Rated Voltage [V]	Rated Current [A]	Rated Speed [min ⁻¹]	Max. Air Flow [m ³ /min] [CFM]	Max. Static Pressure [Pa] [inchH ₂ O]	SPL [dB(A)]
9WS0912H401	12	0.17	2,850	1.38 48.7	45.1 0.181	33
9WS0924H401	24	0.1	2,850	1.38 48.7	45.1 0.181	33

**92×92×25mm 9WP type****IP68****Pulse sensor**

Model No.	Rated Voltage [V]	Rated Current [A]	Rated Speed [min ⁻¹]	Max. Air Flow [m ³ /min] [CFM]	Max. Static Pressure [Pa] [inchH ₂ O]	SPL [dB(A)]
9WP0912S401	12	0.27	3,550	1.66 58.6	57.5 0.231	39
9WP0924G401	24	0.19	3,900	1.76 62.2	66.5 0.267	43


92×92×38mm 9WV type
IP68


Model No.	Rated Voltage [V]	Rated Current [A]	Rated Speed [min ⁻¹]	Max. Air Flow [m ³ /min] [CFM]	Max. Static Pressure [Pa] [inchH ₂ O]	SPL [dB(A)]
9WV0948P1H001	48	0.82	8,500	5.05 178	385 1.55	64


120×120×38mm 9WV type
IP68


Model No.	Rated Voltage [V]	Rated Current [A]	Rated Speed [min ⁻¹]	Max. Air Flow [m ³ /min] [CFM]	Max. Static Pressure [Pa] [inchH ₂ O]	SPL [dB(A)]
9WV1212P1J001	12	3	6,400	6.35 224.0	360 1.45	64
9WV1224P1J601	24	1.5	6,400	6.35 224.0	360 1.45	64
9WV1248P1J001	48	0.65	6,400	6.35 224.0	360 1.45	64


120×120×38mm 9WP type
IP68


Model No.	Rated Voltage [V]	Rated Current [A]	Rated Speed [min ⁻¹]	Max. Air Flow [m ³ /min] [CFM]	Max. Static Pressure [Pa] [inchH ₂ O]	SPL [dB(A)]
9WP1212H101	12	0.38	2,600	2.80 99	70.4 0.283	39
9WP1224H101	24	0.22	2,600	2.80 99	70.4 0.283	39
9WP1248H101	48	0.11	2,600	2.80 99	70.4 0.283	39


120×120×38mm 9WG type
IP55


Model No.	Rated Voltage [V]	Rated Current [A]	Rated Speed [min ⁻¹]	Max. Air Flow [m ³ /min] [CFM]	Max. Static Pressure [Pa] [inchH ₂ O]	SPL [dB(A)]
9WG1212G101-E	12	0.98	3,600	3.88 137	135 0.542	49
9WG1224G101-E	24	0.50	3,600	3.88 137	135 0.542	49
9WG1248G101-E	48	0.25	3,600	3.88 137	135 0.542	49


120×120×38mm 9WS type
IP54


Model No.	Rated Voltage [V]	Rated Current [A]	Rated Speed [min ⁻¹]	Max. Air Flow [m ³ /min] [CFM]	Max. Static Pressure [Pa] [inchH ₂ O]	SPL [dB(A)]
9WS1212H101	12	0.47	2,600	2.9 102.4	67.62 0.272	39
9WS1224H101	24	0.23	2,600	2.9 102.4	67.62 0.272	39
9WS1248H101	48	0.13	2,600	2.9 102.4	67.62 0.272	39


140×140×38mm
IP68


Model No.	Rated Voltage [V]	Rated Current [A]	Rated Speed [min ⁻¹]	Max. Air Flow [m ³ /min] [CFM]	Max. Static Pressure [Pa] [inchH ₂ O]	SPL [dB(A)]
109W1412H101-U	12	0.73	2,600	4.5 159	98 0.394	46
109W1424H101-U	24	0.37	2,600	4.5 159	98 0.394	46
109W1448H101-U	48	0.2	2,600	4.6 159	98 0.394	46

Splash Proof Fan


140×140×51mm 9WB type
IP68


Model No.	Rated Voltage [V]	Rated Current [A]	Rated Speed [min ⁻¹]	Max. Air Flow [m ³ /min] [CFM]	Max. Static Pressure [Pa] [inchH ₂ O]	SPL [dB(A)]
9WB1412S501	12	2.7	4,200	8.1 286.2	240 0.96	57
9WB1424H501	24	0.6	3,100	5.9 208.5	130 0.52	49
9WB1448S501	48	0.71	4,200	8.1 286.2	240 0.96	57


φ172×150×51mm 9WG type
IP68


Model No.	Rated Voltage [V]	Rated Current [A]	Rated Speed [min ⁻¹]	Max. Air Flow [m ³ /min] [CFM]	Max. Static Pressure [Pa] [inchH ₂ O]	SPL [dB(A)]
9WG5748P5G001	48	2.91	8,600	15.46 546	1,000 4.02	78


φ172×150×51mm 9WE type
IP68


Model No.	Rated Voltage [V]	Rated Current [A]	Rated Speed [min ⁻¹]	Max. Air Flow [m ³ /min] [CFM]	Max. Static Pressure [Pa] [inchH ₂ O]	SPL [dB(A)]
9WE5724K501	24	1.3	4,100	8.5 300	243 0.976	60
9WE5748K501	48	0.7	4,100	8.5 300	243 0.976	60


φ172×51mm 9WE type
IP68


Model No.	Rated Voltage [V]	Rated Current [A]	Rated Speed [min ⁻¹]	Max. Air Flow [m ³ /min] [CFM]	Max. Static Pressure [Pa] [inchH ₂ O]	SPL [dB(A)]
9WE1724K501	24	1.3	4,100	8.5 300.1	243 0.97	55

Splash Proof Centrifugal Fan


φ100×25mm
IP54


Model No.	Rated Voltage [V]	Rated Current [A]	Rated Speed [min ⁻¹]	Max. Air Flow [m ³ /min] [CFM]	Max. Static Pressure [Pa] [inchH ₂ O]	SPL [dB(A)]
9W1TM48P4G01	48	0.36	7,400	2.03 71.7	708 2.84	65


φ133×91mm
IP54


Model No.	Rated Voltage [V]	Rated Current [A]	Rated Speed [min ⁻¹]	Max. Air Flow [m ³ /min] [CFM]	Max. Static Pressure [Pa] [inchH ₂ O]	SPL [dB(A)]
9W1TJ24P0H61	24	1.2	4,150	6.39 225	395 1.59	61
9W1TJ48P0H61	48	0.55	4,150	6.39 225	395 1.59	61

Splash Proof Centrifugal Fan


φ150×35mm
IP54
PWM
Pulse sensor

Model No.	Rated Voltage [V]	Rated Current [A]	Rated Speed [min ⁻¹]	Max. Air Flow [m ³ /min] [CFM]	Max. Static Pressure [Pa] [inchH ₂ O]	SPL [dB(A)]
9W1TN48P1H01	48	0.32	3,800	3.83 135	390 1.57	59


φ175×69mm
IP54
PWM
Pulse sensor

Model No.	Rated Voltage [V]	Rated Current [A]	Rated Speed [min ⁻¹]	Max. Air Flow [m ³ /min] [CFM]	Max. Static Pressure [Pa] [inchH ₂ O]	SPL [dB(A)]
9W1TG48P0H61	48	0.65	3,100	9.0 318	360 1.44	64

Oil Proof Fan


40×40×15mm
Pulse sensor

Model No.	Rated Voltage [V]	Rated Current [A]	Rated Speed [min ⁻¹]	Max. Air Flow [m ³ /min] [CFM]	Max. Static Pressure [Pa] [inchH ₂ O]	SPL [dB(A)]
9WF0424H701	24	0.085	11,300	0.195 6.9	80 0.32	38


40×40×20mm
Pulse sensor

Model No.	Rated Voltage [V]	Rated Current [A]	Rated Speed [min ⁻¹]	Max. Air Flow [m ³ /min] [CFM]	Max. Static Pressure [Pa] [inchH ₂ O]	SPL [dB(A)]
9WF0424H601	24	0.11	13,100	0.26 9.2	90 0.361	42


60×60×15mm
Pulse sensor

Model No.	Rated Voltage [V]	Rated Current [A]	Rated Speed [min ⁻¹]	Max. Air Flow [m ³ /min] [CFM]	Max. Static Pressure [Pa] [inchH ₂ O]	SPL [dB(A)]
9WF0624H701	24	0.12	6,800	0.52 18.3	95 0.38	44


60×60×20mm
Pulse sensor

Model No.	Rated Voltage [V]	Rated Current [A]	Rated Speed [min ⁻¹]	Max. Air Flow [m ³ /min] [CFM]	Max. Static Pressure [Pa] [inchH ₂ O]	SPL [dB(A)]
9WF0624H601	24	0.15	6,600	0.69 24.3	114 0.45	42


60×60×25mm
Pulse sensor

Model No.	Rated Voltage [V]	Rated Current [A]	Rated Speed [min ⁻¹]	Max. Air Flow [m ³ /min] [CFM]	Max. Static Pressure [Pa] [inchH ₂ O]	SPL [dB(A)]
9WF0624H401	24	0.15	6,500	0.67 23.6	97 0.38	41

DC San Ace

Oil Proof Fan



80×80×25mm



Model No.	Rated Voltage	Rated Current	Rated Speed	Max. Air Flow		Max. Static Pressure		SPL
	[V]	[A]	[min ⁻¹]	[m ³ /min]	[CFM]	[Pa]	[inchH ₂ O]	[dB(A)]
9WF0824S401	24	0.16	4,000	1.2	42.4	58	0.23	38



92×92×25mm



Model No.	Rated Voltage	Rated Current	Rated Speed	Max. Air Flow		Max. Static Pressure		SPL
	[V]	[A]	[min ⁻¹]	[m ³ /min]	[CFM]	[Pa]	[inchH ₂ O]	[dB(A)]
9WF0924H401	24	0.13	3,900	1.45	51.2	66	0.26	42.5



92×92×32mm



Model No.	Rated Voltage	Rated Current	Rated Speed	Max. Air Flow		Max. Static Pressure		SPL
	[V]	[A]	[min ⁻¹]	[m ³ /min]	[CFM]	[Pa]	[inchH ₂ O]	[dB(A)]
9WF0924S201	24	0.5	7,300	2.8	98.9	255	1.02	58



120×120×38mm



Model No.	Rated Voltage	Rated Current	Rated Speed	Max. Air Flow		Max. Static Pressure		SPL
	[V]	[A]	[min ⁻¹]	[m ³ /min]	[CFM]	[Pa]	[inchH ₂ O]	[dB(A)]
9WF1224H101	24	0.32	3,100	3.34	118	100	0.40	46

Long Life Fan



40×40×28mm



Model No.	Rated Voltage	Rated Current	Rated Speed	Max. Air Flow		Max. Static Pressure		SPL
	[V]	[A]	[min ⁻¹]	[m ³ /min]	[CFM]	[Pa]	[inchH ₂ O]	[dB(A)]
9L0412J301	12	0.31	11,700	0.52	18.4	206	0.827	48



60×60×25mm 9LG type



Model No.	Rated Voltage	Rated Current	Rated Speed	Max. Air Flow		Max. Static Pressure		SPL
	[V]	[A]	[min ⁻¹]	[m ³ /min]	[CFM]	[Pa]	[inchH ₂ O]	[dB(A)]
9LG0612P4S001	12	0.67	11,000	1.40	49.4	300	1.204	53
9LG0624P4S001	24	0.34	11,000	1.40	49.4	300	1.204	53
9LG0648P4S001	48	0.18	11,000	1.40	49.4	305	1.224	53



OPTION Ribless...Ribless models are available

Long Life Fan



60×60×25mm



Model No.	Rated Voltage [V]	Rated Current [A]	Rated Speed [min ⁻¹]	Max. Air Flow [m ³ /min] [CFM]	Max. Static Pressure [Pa] [inchH ₂ O]	SPL [dB(A)]
109L0612G401	12	0.24	5,600	0.78 27.5	87.3 0.35	39
109L0624D401	24	0.12	5,150	0.72 25.4	73.8 0.296	37
109L0648G401	48	0.07	5,600	0.78 27.5	87.3 0.35	39



60×60×76mm 9CRL type



Model No.	Rated Voltage [V]	Rated Current [A]	Rated Speed [min ⁻¹]		Max. Air Flow [m ³ /min] [CFM]		Max. Static Pressure [Pa] [inchH ₂ O]		SPL [dB(A)]
			Inlet	Outlet	2.0	70.6	1,000	4.0	
9CRL0612P0G001	12	2.3	16,500	13,000	2.0	70.6	1,000	4.0	66



80×80×25mm 9LG type



Model No.	Rated Voltage [V]	Rated Current [A]	Rated Speed [min ⁻¹]	Max. Air Flow [m ³ /min] [CFM]	Max. Static Pressure [Pa] [inchH ₂ O]	SPL [dB(A)]
9LG0812P4J001	12	0.6	7,400	2.07 73.0	177 0.71	49
9LG0824P4J001	24	0.28	7,400	2.07 73.0	177 0.71	49



80×80×25mm



Model No.	Rated Voltage [V]	Rated Current [A]	Rated Speed [min ⁻¹]	Max. Air Flow [m ³ /min] [CFM]	Max. Static Pressure [Pa] [inchH ₂ O]	SPL [dB(A)]
109L0812S401	12	0.26	3,400	1.2 42.4	50 0.2	37
109L0824S401	24	0.11	3,400	1.2 42.4	50 0.2	37
109L0848H401	48	0.06	3,150	1.1 38.8	43.1 0.173	34



80×80×80mm 9CRL type



Model No.	Rated Voltage [V]	Rated Current [A]	Rated Speed [min ⁻¹]		Max. Air Flow [m ³ /min] [CFM]		Max. Static Pressure [Pa] [inchH ₂ O]		SPL [dB(A)]
			Inlet	Outlet	4.5	158.9	1,150	4.62	
9CRL0812P8G001	12	5.3	12,000	11,300	4.5	158.9	1,150	4.62	76



92×92×25mm 9LG type



Model No.	Rated Voltage [V]	Rated Current [A]	Rated Speed [min ⁻¹]	Max. Air Flow [m ³ /min] [CFM]	Max. Static Pressure [Pa] [inchH ₂ O]	SPL [dB(A)]
9LG0912P4J001	12	0.42	5,000	2.20 77.7	105 0.42	44
9LG0924P4J001	24	0.21	5,000	2.20 77.7	105 0.42	44

Long Life Fan



92×92×25mm



Model No.	Rated Voltage [V]	Rated Current [A]	Rated Speed [min ⁻¹]	Max. Air Flow [m ³ /min] [CFM]	Max. Static Pressure [Pa] [inchH ₂ O]	SPL [dB(A)]
109L0912S401	12	0.32	3,500	1.69 59.7	66.6 0.267	39
109L0924H401	24	0.12	2,850	1.38 48.7	45.1 0.181	33
109L0948C401	48	0.1	3,400	1.65 58.3	64.2 0.258	38



120×120×38mm 9LB type



Model No.	Rated Voltage [V]	Rated Current [A]	Rated Speed [min ⁻¹]	Max. Air Flow [m ³ /min] [CFM]	Max. Static Pressure [Pa] [inchH ₂ O]	SPL [dB(A)]
9LB1212H101	12	0.39	2,600	2.9 102.4	67.62 0.272	39
9LB1224S101	24	0.46	3,500	3.88 137.0	120.8 0.485	48
9LB1248H101	48	0.11	2,600	2.9 102.4	67.62 0.272	39



120×120×38mm 9GL type



Model No.	Rated Voltage [V]	Rated Current [A]	Rated Speed [min ⁻¹]	Max. Air Flow [m ³ /min] [CFM]	Max. Static Pressure [Pa] [inchH ₂ O]	SPL [dB(A)]
9GL1212G101	12	0.98	3,600	3.88 137	135 0.542	49
9GL1224G101	24	0.5	3,600	3.88 137	135 0.542	49
9GL1248G101	48	0.25	3,600	3.88 137	135 0.542	49



140×140×38mm



Model No.	Rated Voltage [V]	Rated Current [A]	Rated Speed [min ⁻¹]	Max. Air Flow [m ³ /min] [CFM]	Max. Static Pressure [Pa] [inchH ₂ O]	SPL [dB(A)]
109L1412H101	12	0.73	2,600	4.6 159	98 0.394	46
109L1424H101	24	0.37	2,600	4.6 159	98 0.394	46
109L1448H101	48	0.2	2,600	4.6 159	98 0.394	46



140×140×51mm 9LB type



Model No.	Rated Voltage [V]	Rated Current [A]	Rated Speed [min ⁻¹]	Max. Air Flow [m ³ /min] [CFM]	Max. Static Pressure [Pa] [inchH ₂ O]	SPL [dB(A)]
9LB1412S501	12	2.7	4,200	8.1 286.2	240 0.96	57
9LB1424S501	24	1.38	4,200	8.1 286.2	240 0.96	57
9LB1448S501	48	0.71	4,200	8.1 286.2	240 0.96	57



φ172×150×51mm



Model No.	Rated Voltage		Rated Current [A]	Rated Speed [min ⁻¹]	Max. Air Flow		Max. Static Pressure		SPL [dB(A)]
	[V]	[A]			[m ³ /min]	[CFM]	[Pa]	[inchH ₂ O]	
109L5712H501	12	1.2	3,050	6.4	226	137.2	0.551	52	
109L5724H501	24	0.58	3,050	6.4	226	137.2	0.551	52	
109L5748H501	48	0.28	3,050	6.4	226	137.2	0.551	52	



φ172×51mm



Model No.	Rated Voltage		Rated Current [A]	Rated Speed [min ⁻¹]	Max. Air Flow		Max. Static Pressure		SPL [dB(A)]
	[V]	[A]			[m ³ /min]	[CFM]	[Pa]	[inchH ₂ O]	
109L1712H501	12	1.2	3,050	6.4	226	137.2	0.551	47	
109L1724H501	24	0.58	3,050	6.4	226	137.2	0.551	47	
109L1748H501	48	0.28	3,050	6.4	226	137.2	0.551	47	

Centrifugal Fan



φ100×25mm



Model No.	Rated Voltage		Rated Current [A]	Rated Speed [min ⁻¹]	Max. Air Flow		Max. Static Pressure		SPL [dB(A)]
	[V]	[A]			[m ³ /min]	[CFM]	[Pa]	[inchH ₂ O]	
9TM48P4H01	48	0.22	6,400	1.77	62.5	560	2.25	60	



φ133×91mm



Model No.	Rated Voltage		Rated Current [A]	Rated Speed [min ⁻¹]	Max. Air Flow		Max. Static Pressure		SPL [dB(A)]
	[V]	[A]			[m ³ /min]	[CFM]	[Pa]	[inchH ₂ O]	
9TJ24P0H61	24	1.2	4,150	6.39	226	395	1.59	61	
9TJ48P0H01	48	0.55	4,150	6.39	226	395	1.59	61	



φ150×35mm



Model No.	Rated Voltage		Rated Current [A]	Rated Speed [min ⁻¹]	Max. Air Flow		Max. Static Pressure		SPL [dB(A)]
	[V]	[A]			[m ³ /min]	[CFM]	[Pa]	[inchH ₂ O]	
9TN24P1H01	24	0.62	3,800	3.83	135	410	1.65	59	
9TN48P1H01	48	0.32	3,800	3.83	135	390	1.57	59	



φ175×69mm



Model No.	Rated Voltage		Rated Current [A]	Rated Speed [min ⁻¹]	Max. Air Flow		Max. Static Pressure		SPL [dB(A)]
	[V]	[A]			[m ³ /min]	[CFM]	[Pa]	[inchH ₂ O]	
9TG24P0G01	24	3.9	4,700	14.0	494.7	885	3.55	73	
9TG48P0G01	48	1.95	4,700	14.0	494.7	885	3.55	73	

Blower



52×15mm



Model No.	Rated Voltage		Rated Current [A]	Rated Speed [min ⁻¹]	Max. Air Flow		Max. Static Pressure		SPL [dB(A)]
	[V]	[A]			[m ³ /min]	[CFM]	[Pa]	[inchH ₂ O]	
109BC12GC7-1	12	0.12	6,200	0.125	4.4	215	0.86	43	
109BC24GC7-1	24	0.07	6,200	0.125	4.4	215	0.86	43	



76×20mm



Model No.	Rated Voltage		Rated Current [A]	Rated Speed [min ⁻¹]	Max. Air Flow		Max. Static Pressure		SPL [dB(A)]
	[V]	[A]			[m ³ /min]	[CFM]	[Pa]	[inchH ₂ O]	
9BD12SC6-1	12	0.28	4,500	0.29	10.2	300	1.20	43	
9BD24SC6-1	24	0.14	4,500	0.29	10.2	300	1.20	43	



76×30mm



Model No.	Rated Voltage		Rated Current [A]	Rated Speed [min ⁻¹]	Max. Air Flow		Max. Static Pressure		SPL [dB(A)]
	[V]	[A]			[m ³ /min]	[CFM]	[Pa]	[inchH ₂ O]	
109BD12HC2	12	0.37	3,000	0.36	12.7	151.9	0.610	41.5	
109BD24HC2	24	0.17	3,000	0.36	12.7	151.9	0.610	41.5	



97×33mm



Model No.	Rated Voltage		Rated Current [A]	Rated Speed [min ⁻¹]	Max. Air Flow		Max. Static Pressure		SPL [dB(A)]
	[V]	[A]			[m ³ /min]	[CFM]	[Pa]	[inchH ₂ O]	
109BM12GC2-1	12	0.60	3,800	0.82	28.9	281	1.129	51.5	
109BM24GC2-1	24	0.31	3,800	0.82	28.9	281	1.129	51.5	



97×33mm



Model No.	Rated Voltage		Rated Current [A]	Rated Speed [min ⁻¹]	Max. Air Flow		Max. Static Pressure		SPL [dB(A)]
	[V]	[A]			[m ³ /min]	[CFM]	[Pa]	[inchH ₂ O]	
9BMB12P2K01	12	3.4	6,850	1.61	56.8	1,280	5.14	66	
9BMB24P2K01	24	1.62	6,850	1.61	56.8	1,280	5.14	66	



120×32mm



Model No.	Rated Voltage		Rated Current [A]	Rated Speed [min ⁻¹]	Max. Air Flow		Max. Static Pressure		SPL [dB(A)]
	[V]	[A]			[m ³ /min]	[CFM]	[Pa]	[inchH ₂ O]	
109BF12HC2	12	0.6	2,400	0.78	27.5	175.4	0.704	52	
109BF24HC2	24	0.3	2,400	0.78	27.5	175.4	0.704	52	

**120×32mm**

Model No.	Rated Voltage [V]	Rated Current [A]	Rated Speed [min ⁻¹]	Max. Air Flow		Max. Static Pressure		SPL
				[m ³ /min]	[CFM]	[Pa]	[inchH ₂ O]	[dB(A)]
9BFB12P2H003	12	2.3	3,750	1.6	56.5	1,250	5.02	62
9BFB24P2H003	24	1.1	3,750	1.6	56.5	1,250	5.02	62

**127×32mm**

Model No.	Rated Voltage [V]	Rated Current [A]	Rated Speed [min ⁻¹]	Max. Air Flow		Max. Static Pressure		SPL
				[m ³ /min]	[CFM]	[Pa]	[inchH ₂ O]	[dB(A)]
109BJ12HC2	12	0.52	2,400	0.78	27.5	205.8	0.826	46
109BJ24HC2	24	0.26	2,400	0.78	27.5	205.8	0.826	46

**160×40mm**

Model No.	Rated Voltage [V]	Rated Current [A]	Rated Speed [min ⁻¹]	Max. Air Flow		Max. Static Pressure		SPL
				[m ³ /min]	[CFM]	[Pa]	[inchH ₂ O]	[dB(A)]
109BG12HC1	12	1.3	2,300	1.62	57.2	313.6	1.259	55
109BG24HC1	24	0.62	2,300	1.62	57.2	313.6	1.259	55

AC San Ace

AC Fan



120×120×38mm 9AD type

OPTION
Ribless

Model No.	Voltage [V]	Input [W]	Rated Speed [min ⁻¹]	Max. Air Flow [m ³ /min] [CFM]	Max. Static Pressure [Pa] [inchH ₂ O]	SPL [dB(A)]
9AD1201H12	100~240	4.4	3,250	3.0 106	84 0.34	42



60×60×28mm

Model No.	Voltage [V]	Input [W]	Rated Speed [min ⁻¹]	Max. Air Flow [m ³ /min] [CFM]	Max. Static Pressure [Pa] [inchH ₂ O]	SPL [dB(A)]
109-180	100	5/4	2,250/2,700	0.27/0.33 9.5/11.7	11.8/18.6 0.047/0.075	24/26
109-183	115					



60×60×38mm

Model No.	Voltage [V]	Input [W]	Rated Speed [min ⁻¹]	Max. Air Flow [m ³ /min] [CFM]	Max. Static Pressure [Pa] [inchH ₂ O]	SPL [dB(A)]
109-130	100	6/5	2,600/3,150	0.33/0.4 11.7/14.1	16.3/23.3 0.065/0.094	28/30
109-133	115					



80×80×20mm

Model No.	Voltage [V]	Input [W]	Rated Speed [min ⁻¹]	Max. Air Flow [m ³ /min] [CFM]	Max. Static Pressure [Pa] [inchH ₂ O]	SPL [dB(A)]
109-210	100	6/5	2,500/3,000	0.44/0.53 15.5/18.7	23.5/31.4 0.094/0.126	26/31
109-213	115					



80×80×25mm

Model No.	Voltage [V]	Input [W]	Rated Speed [min ⁻¹]	Max. Air Flow [m ³ /min] [CFM]	Max. Static Pressure [Pa] [inchH ₂ O]	SPL [dB(A)]
109S050	100	9/7	2,650/3,100	0.63/0.76 22.3/26.9	27.5/38.3 0.110/0.154	30/33
109S053	115					
109S051	200					
109S054	230		2,350/2,700	0.55/0.63 19.4/22.3	21.6/28.4 0.087/0.114	28/30
109S030	100					
109S033	115					
109S031	200					
109S034	230					



80×80×38mm

Model No.	Voltage [V]	Input [W]	Rated Speed [min ⁻¹]	Max. Air Flow [m ³ /min] [CFM]	Max. Static Pressure [Pa] [inchH ₂ O]	SPL [dB(A)]
109-150	100	9/8	2,700/3,150	0.9/1.05 31.8/37.1	31.4/44.1 0.126/0.177	35/39
109-153	115					
109-151	200					
109-154	230					



The frequencies of 50/60Hz are existing in Japan. Performance of AC fan varies depending on the frequency.
 Example: Rated speed 2,250/2,700 = 50Hz → 2,250, 60Hz → 2,700



80×80×42mm

Model No.	Voltage [V]	Input [W]	Rated Speed [min ⁻¹]	Max. Air Flow [m ³ /min] [CFM]	Max. Static Pressure [Pa] [inchH ₂ O]	SPL [dB(A)]
109-040UL	100					
109-043UL	115					
109-041UL	200	10/9	2,650/3,100	0.85/1.0 30.0/35.3	24.5/35.3 0.098/0.142	40/44
109-044UL	230					
109-047UL ※	100	4/3.5	1,500/1,500	0.43/0.43 15.2/15.2	8.8/8.8 0.035/0.035	24/24
109-033UL ※	115					

※ represents low-speed.



92×92×25mm

Model No.	Voltage [V]	Input [W]	Rated Speed [min ⁻¹]	Max. Air Flow [m ³ /min] [CFM]	Max. Static Pressure [Pa] [inchH ₂ O]	SPL [dB(A)]
109S091	100					
109S093	115	8/7				
109S092	200	11/10	2,700/3,100	0.95/1.1 33.6/38.9	39.2/49.0 0.157/0.197	35/38
109S094	230	10/9				
109S095	100	8/7	2,400/2,800	0.84/0.98 29.7/34.6	31.4/40.2 0.126/0.161	32/35
109S096 ※	100					
109S193 ※	115	7/6				
109S192 ※	200		1,500/1,700	0.55/0.65 19.4/23	12.5/16.3 0.050/0.065	24/27
109S194 ※	230	8/7				

※ represents low-speed.



92×92×25mm

Sensor

Model No.	Voltage [V]	Input [W]	Rated Speed [min ⁻¹]	Max. Air Flow [m ³ /min] [CFM]	Max. Static Pressure [Pa] [inchH ₂ O]	SPL [dB(A)]
109S491	100					
109S493	115	8/7				
109S492	200	11/10	2,700/3,100	0.95/1.1 33.6/38.9	39.2/49.0 0.157/0.197	35/38
109S494	230	10/9				
109S495	100	8/7	2,400/2,800	0.84/0.98 29.7/34.6	31.4/40.2 0.126/0.161	32/35
109S496 ※	100	7/6	1,500/1,700	0.55/0.65 19.4/23	12.5/16.3 0.050/0.065	24/27

※ represents low-speed.



120×120×25mm

Model No.	Voltage [V]	Input [W]	Rated Speed [min ⁻¹]	Max. Air Flow [m ³ /min] [CFM]	Max. Static Pressure [Pa] [inchH ₂ O]	SPL [dB(A)]
109S085	100					
109S084	115					
109S088	200	13.5/12	2,500/2,900	1.95/2.3 68.9/81.3	48 /51.9 0.193/0.216	38/41
109S087	230					
109S081	100					
109S083	115					
109S082	200	9.5/8.5	2,200/2,350	1.7 /1.8 60.1/63.6	29.4/26.5 0.118/0.106	34/35
109S089	230					
109S086 ※	100	12/10	1,400/1,600	1.1 /1.25 38.9/44.2	14.7/18.6 0.059/0.075	24/27

※ represents low-speed.

OPTION Ribless ...Ribless models are available

AC Fan



120×120×25mm

Sensor

Model No.	Voltage [V]	Input [W]	Rated Speed [min ⁻¹]	Max. Air Flow [m ³ /min] [CFM]	Max. Static Pressure [Pa] [inchH ₂ O]	SPL [dB(A)]		
109S485	100							
109S484	115	13.5/12	2,500/2,900	1.95/2.3	68.9/81.3	48 /51.9		
109S488	200							
109S487	230							
109S486*	100	12/10	1,400/1,600	1.1 /1.25	38.9/44.2	14.7/18.6	0.059/0.075	24/27

* represents low-speed.



120×120×38mm

Model No.	Voltage [V]	Input [W]	Rated Speed [min ⁻¹]	Max. Air Flow [m ³ /min] [CFM]	Max. Static Pressure [Pa] [inchH ₂ O]	SPL [dB(A)]		
109S075UL	100							
109S074UL	115	18/16	2,700/3,100	2.5 /2.9	88.3/102.5	57.9/68.7		
109S078UL	200							
109S072UL	230							
109S005	100							
109S005UL	120							
109S024	115	14/12	2,700/3,100	2.35/2.7	83 / 95.4	55.9/65.7		
109S024UL	200							
109S008	230							
109S008UL	200							
109S025	230							
109S025UL	14/12	2,450/2,700	2.15/2.35	76 / 83	44.1/49.0	0.177/0.197	38/40	
109S013	100	13/11	1,800/2,000	1.55/1.75	54.8/ 60.8	23.5/26.4		
109S013UL	200							
109S006 *	230							
109S006UL *	115	10/10	1,800/1,900	1.56/1.64	55 / 57.9	20 /20.6	0.080/0.083	30/31
109S010 *	200	7/7	1,650/1,700	1.45/1.5	51.2/ 53	17.6/17.6	0.071/0.071	28/28
109S010UL *	240	11/11	1,800/1,950	1.58/1.68	55.8/ 59.3	20.6/21.6	0.083/0.087	30/32

* represents low-speed.



120×120×38mm

Sensor

Model No.	Voltage [V]	Input [W]	Rated Speed [min ⁻¹]	Max. Air Flow [m ³ /min] [CFM]	Max. Static Pressure [Pa] [inchH ₂ O]	SPL [dB(A)]		
109S405UL	100							
109S424UL	115	14/12	2,700/3,100	2.35/2.7	83/95.4	55.9/65.7		
109S408UL	200							
109S425UL	230							
109S429UL	100		2,450/2,700	2.15/2.35	76/83	44.1/49.0	0.177/0.197	38/40
109S406UL*	100	7/6	1,650/1,700	1.45/1.5	51/53	17.7/17.7	0.071/0.071	28/28
109S475UL	100							
109S474UL	115	18/16	2,700/3,100	2.5 /2.9	88.3/102.4	57.9/68.7		
109S478UL	200							
109S472UL	230							

* represents low-speed.





160×160×51mm

Model No.	Voltage [V]	Input [W]	Rated Speed [min ⁻¹]	Max. Air Flow [m ³ /min] [CFM]	Max. Static Pressure [Pa] [inchH ₂ O]	SPL [dB(A)]
109-601	100					
109-604	115	37.5/33	2,850/3,350	7.2/8.5	254.4/300.4	156.8/166.6
109-602	200					
109-603	230					



160×160×51mm

Sensor

Model No.	Voltage [V]	Input [W]	Rated Speed [min ⁻¹]	Max. Air Flow [m ³ /min] [CFM]	Max. Static Pressure [Pa] [inchH ₂ O]	SPL [dB(A)]
109-641	100					
109-644	115	37.5/33	2,850/3,350	7.2/8.5	254.4/300.4	156.8/166.6
109-642	200					
109-643	230					



φ172×150×51mm

Model No.	Voltage [V]	Input [W]	Rated Speed [min ⁻¹]	Max. Air Flow [m ³ /min] [CFM]	Max. Static Pressure [Pa] [inchH ₂ O]	SPL [dB(A)]
109S301	100					
109S304	115	27/25	2,900/3,500	5.3/6.4	187.3/226.1	147/196
109S302	200					
109S303	230					



φ172×51mm

Model No.	Voltage [V]	Input [W]	Rated Speed [min ⁻¹]	Max. Air Flow [m ³ /min] [CFM]	Max. Static Pressure [Pa] [inchH ₂ O]	SPL [dB(A)]
109-311	100					
109-314	115	27/25	2,900/3,500	5.3/6.4	187.3/226.1	147/196
109-312	200					
109-313	230					

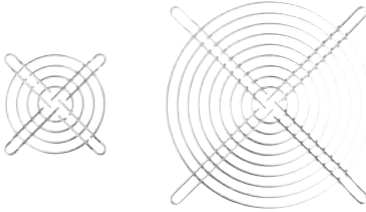


φ172×51mm

Sensor

Model No.	Voltage [V]	Input [W]	Rated Speed [min ⁻¹]	Max. Air Flow [m ³ /min] [CFM]	Max. Static Pressure [Pa] [inchH ₂ O]	SPL [dB(A)]
109-371	100					
109-374	115	27/25	2,900/3,500	5.3/6.4	187.3/226.1	147/196
109-372	200					
109-373	230					

Finger guards



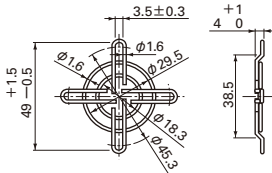
High quality genuine finger guard prevents fans from inhaling dust and can enhance safety.

We recommend the use of the finger guard for stable operation. There is no significant difference in the air flow - static pressure characteristic when using the finger guard.

Surface treatment : Nickel-chrome plating (Color-silver)

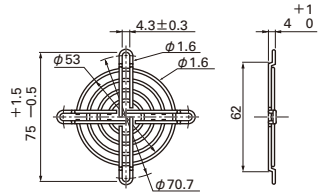
40mm sq. type

Model No. : 109-059
Inlet side, Outlet side



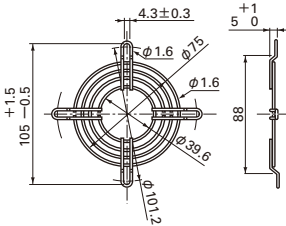
60mm sq. type

Model : 109-139E
Inlet side, Outlet side

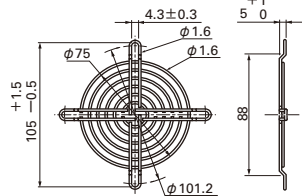


80mm sq. type

Model : 109-049C
Outlet side

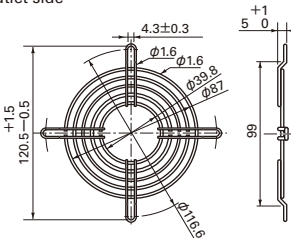


Model : 109-049E
Inlet side, Outlet side

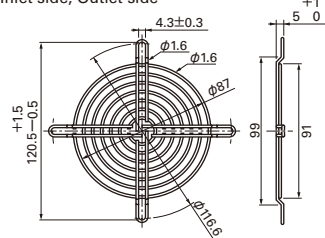


92mm sq. type

Model : 109-099C
Outlet side



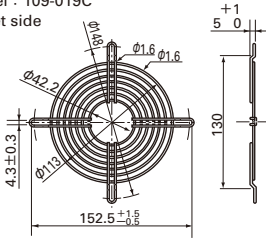
Model : 109-099E
Inlet side, Outlet side



120mm sq. type

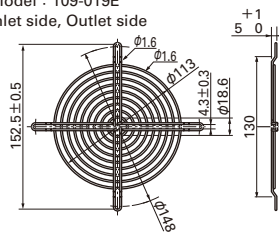
Model : 109-019C

Outlet side



Model : 109-019E

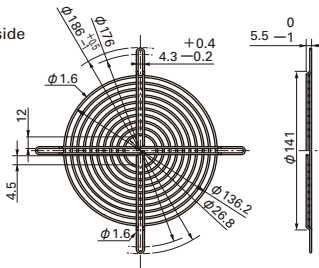
Inlet side, Outlet side



140mm sq. type

Model : 109-719

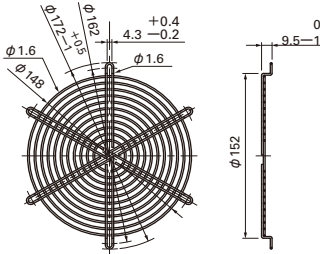
Inlet side, Outlet side



φ172mm sq. type

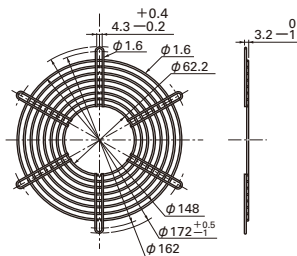
Model : 109-319E

Inlet side, Outlet side



Model : 109-320

Outlet side



φ 172mm type:
Please install at the point of symmetry.

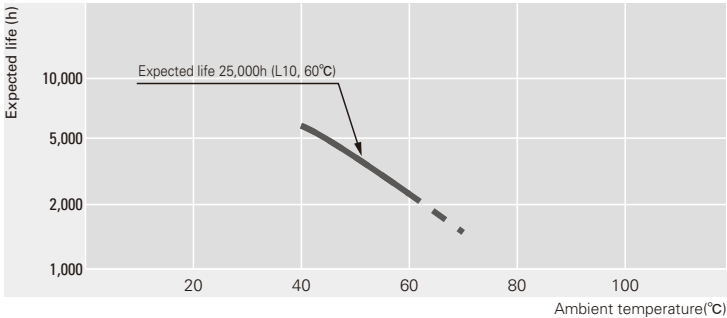
Reliability and Expected Life

A cooling fan generally cools itself as well. The temperature rise of the motor is relatively low and the temperature rise of the grease in the bearings is also low, so expected life is longer than general some other motors. Since the service life of bearings is a theoretical value that applies when they are ideally lubricated, the life of lubricant can be regarded as expected life of the fan.

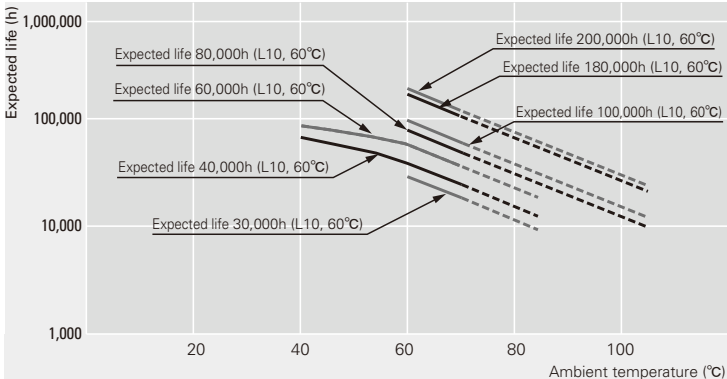
The expected life of an AC fan used at an ambient temperature 60°C is 25,000 hours. The DC fan consumes less power and its temperature rise of bearing is very low, thus its expected life is 40,000 hours at an ambient temperature of 60°C (30,000, 60,000, 80,000 hours for some models). Sanyo Denki also has a line-up of long life fans that has 200,000 hours life to 100,000 hours life at an ambient temperature 60°C with an even more enhanced structure and material. When the measurement conditions are: L10 (the remaining product life in the lifespan test is 90%), with an atmospheric temperature of 60 degrees, at the rated voltage, and continuously run in a free air state.

The table below indicates the relationship between ambient temperature and expected life estimated on the basis of our life tests and same other tests conducted by Sanyo Denki. An accelerated life test is conducted on the basis of the concept that the expected life halves as the ambient temperature rises by about 15°C (within the operating temperature range of lubricant.)

Expected life of AC Fans



Expected life of DC Fans



Rated voltage, continuously run in a free air state, survival rate of 90%

Operating precautions

Storage temperature

There is no performance problem when the system is used at between -30°C and $+70^{\circ}\text{C}$ (between -20°C and $+70^{\circ}\text{C}$ for some models.). There is a possibility that same problem of lubricant and insulation inside motor might occur by condensing due to rapid surrounding temperature change. Therefore, please take care of non-condensing using desiccant or something during fan is in storage.

Handling precautions

The fan motor is equipped with a precision ball bearing. Therefore, please handle the motors carefully in order not to shock the bearings.

Recommended screw torque

This shows the recommended values for the screw torque when installing the fans. If the tightening torque is higher than the recommended values, the fan can be deformed or damaged. Use care when tightening.

Also, be sure to always use a fan with a ribbed structure when using screws to pass through and secure the fan.

AC Fans : $0.44\text{N}\cdot\text{m}$ ($4.5\text{kgf}\cdot\text{cm}$) or less (with M3 screws)

AC Fans : $0.78\text{N}\cdot\text{m}$ ($8\text{kgf}\cdot\text{cm}$) or less (with M4 screws)

: Applies to fan motors of $160\text{mm}\times 160\text{mm}$, $\phi 172\text{mm}$

DC Fans : $0.44\text{N}\cdot\text{m}$ ($4.5\text{kgf}\cdot\text{cm}$) or less (with M3 screws)

: Applies to fan motors of $52\text{mm}\times 52\text{mm}$ MAX.

DC Fans : $0.78\text{N}\cdot\text{m}$ ($8\text{kgf}\cdot\text{cm}$) or less (with M4 screws)

: Applies to fan motors of $60\text{mm}\times 60\text{mm}$ MIN.

DC Fans : $0.98\text{N}\cdot\text{m}$ ($10\text{kgf}\cdot\text{cm}$) or less (with M4 screws)

: Applies to fan motors of $\phi 200\text{mm}$

ECO PRODUCTS



ECO PRODUCTS

Sanyo Denki's ECO PRODUCTS are designed with the concept of lessening impact on the environment in the process from product development to waste.

The product units and packaging materials are designed for reduced environmental impact. We have established our own assessment criteria on the environmental impacts applicable to all processes, ranging from design to manufacture.

Those products that satisfy the criteria are accredited as ECO PRODUCTS.

- The products shown in the catalog are subject to Japanese Export Control Law. Diversion contrary to the law of exporting country is prohibited.
- To protect against electrolytic corrosion that may occur in locations with strong electromagnetic noise, we provide fans that are unaffected by electrolytic corrosion.

<http://www.sanyodenki.com>

SANYO DENKI CO.,LTD.

TEL: +81 3 5927 1020

3-33-1, Minami-Otsuka, Toshima-ku, Tokyo, 170-8451, Japan

SANYO DENKI EUROPE SA.

TEL: +33 1 48 63 26 61

P.A. Paris Nord II, 48 Allée des Erables-VILLEPINTE, BP.57286,
F-95958 ROISSY CDG Cedex, France

SANYO DENKI AMERICA,INC.

TEL: +1 310 783 5400

468 Amapola Avenue Torrance, CA 90501, U.S.A.

SANYO DENKI SHANGHAI CO.,LTD.

TEL: +86 21 6235 1107

Room 2106-2109, Bldg A, Far East International Plaza, No.319, Xianxia Road,
Shanghai, 200051, China

Beijing Branch

TEL: +86 10 6522 2160

Room1222, Tower B, Beijing COFCO Plaza, No.8 Jianguomennei Dajie,
Dong Cheng District, Beijing 100005 China

SANYO DENKI (H.K.)CO., LIMITED

TEL: +852 2312 6250

Room 2305, 23/F, South Tower, Concordia Plaza, 1 Science Museum Road, TST East,
Kowloon, Hong Kong

Tianjin Representative Office

TEL: +86 22 2320 1186

Room AB 16th Floor TEDA Building, No. 256 Jie Fang Nan Road, Hexi District,
Tianjin 300042 China

Chengdu Representative Office

TEL: +86 28 8661 6901

Room2105B, Block A, Times Plaza, 2 Zongfu Road, Jinjiang District,
Chengdu, 610016 China

SANYO DENKI TAIWAN CO.,LTD.

TEL: +886 2 2511 3938

Room 1208, 12F, No.96 Chung Shan N, Road, Sec.2, Taipei 104, Taiwan, R.O.C.

SANYO DENKI SINGAPORE PTE. LTD.

TEL: +65 6223 1071

10, Hoe Chiang Road, #14-03A/04, Keppel Towers, Singapore 089315

India Liaison Office

TEL: +91 44 420 384 72

#14 (Old No.6/3), Avenue Road, Nungambakkam, Chennai - 600034 India

SANYO DENKI GERMANY GmbH

TEL: +49 6196 76113 0

Frankfurter Strasse 92, 65760 Eschborn, Germany

SANYO DENKI KOREA CO., LTD.

TEL: +82 2 773 5623

9F 5-2, Sunwha-dong Jung-gu Seoul, 100-130, Korea

SANYO DENKI (Shenzhen)CO., LTD.

TEL: +86 755 3337 3865

Room01-05 2/F, Office Tower, Di Wang Commercial Centre Shun Hing Square,
5002 Shen Nan Road East, Shenzhen, China

SANYO DENKI (THAILAND)CO., LTD.

TEL: +66 2261 8670

1702-2 Exchange Tower, 388 Sukhumvit Road, Klongtoey, Bangkok 10110 Thailand

The names of companies and/or their products specified in this leaflet are the trade names, and/or trademarks and/or registered trademarks of such respective companies.

Specifications are subject to change without notice.

CATALOG No.C1011B005 '14.3.IT